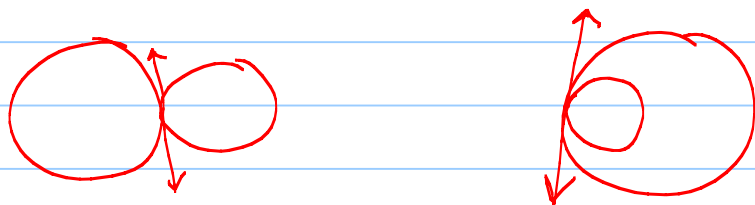
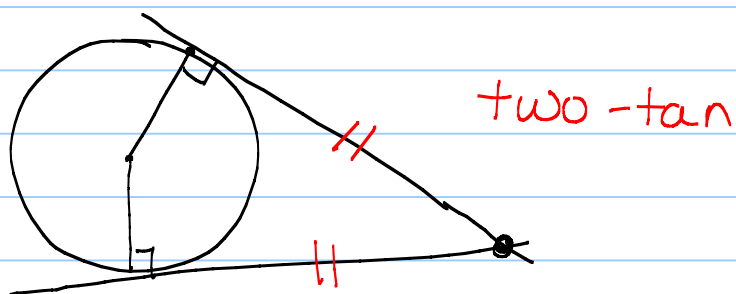
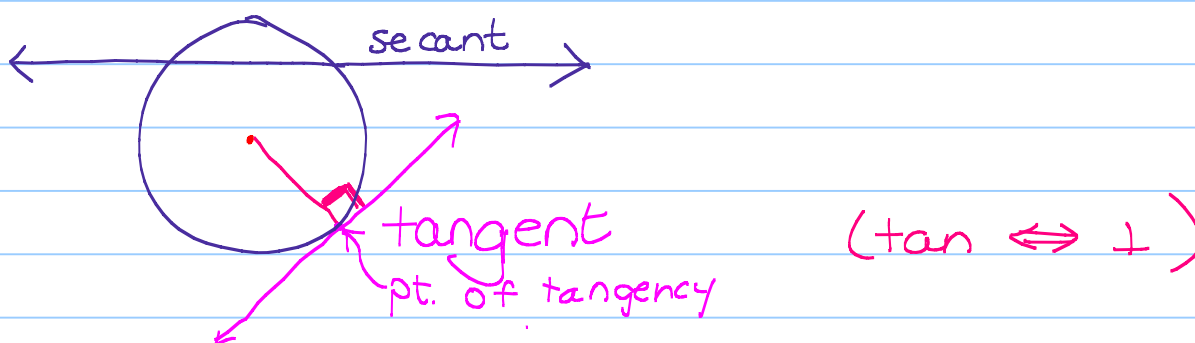


10-3: 6, 9a, 9c, 10-13, 17-20

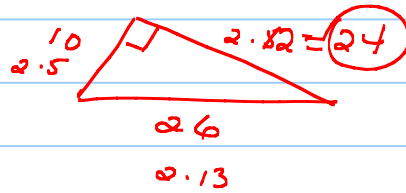
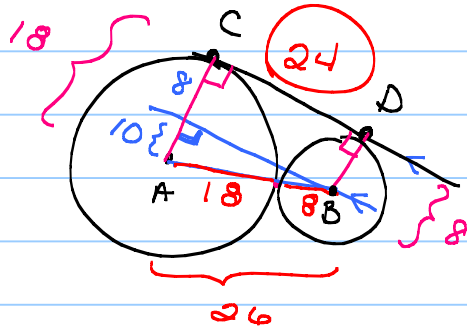
Mon	1/25	10-4: 3, 6, 10, 12, 13, 14, 16, 17, 21, 23, 25 Short review
Tues	1/26	Quiz 10.1-4 8 problems (3 pts ea) and one proof (5 pts)



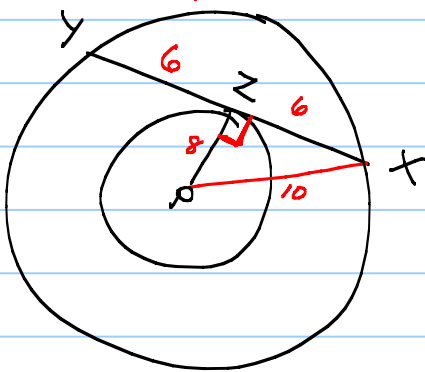
Common Tangents

$$r_A = 18$$

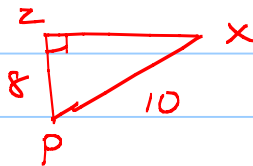
$$r_B = 8$$



2.



Draw rad



$$ZX = 6$$

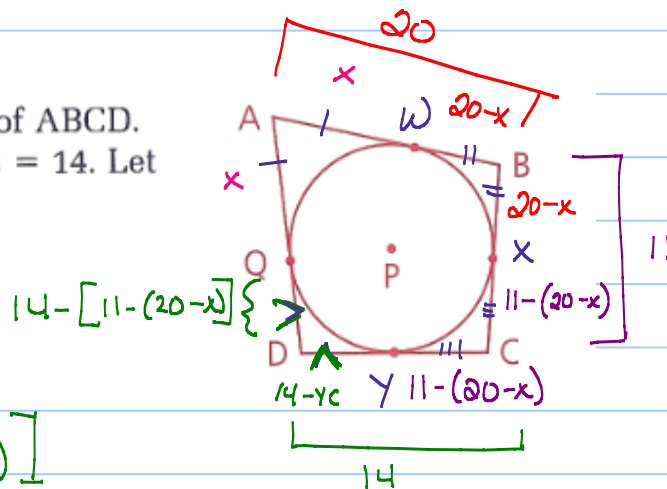
rad \perp chd \Rightarrow bis

$$\therefore YX = 12$$

Walk around!

10 $\odot P$ is tangent to each side of $ABCD$. $AB = 20$, $BC = 11$, and $DC = 14$. Let $AQ = x$ and find AD .

two-tan thm



$$\begin{aligned} AD &= x + 14 - [11 - (20 - x)] \\ &\quad - [11 - 20 + x] \\ &= \underline{x} + 14 - 11 + 20 - \underline{x} \\ &= 23 \end{aligned}$$