

1. in class

2a $\sin 30^\circ = \frac{1}{2}$ d) $\sin 60^\circ = \frac{O}{H} = \frac{x\sqrt{3}}{2x} = \frac{\sqrt{3}}{2}$

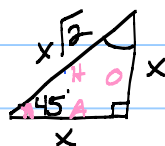
b $\cos 30^\circ = \frac{\sqrt{3}}{2}$ c) $\cos 60^\circ = \frac{1}{2}$

c $\tan 30^\circ = \frac{1}{\sqrt{3}}$ f) $\tan 60^\circ = \sqrt{3}$

3a $\sin 45^\circ = \frac{x}{x\sqrt{2}} = \frac{1}{\sqrt{2}} = \frac{\sqrt{2}}{2}$

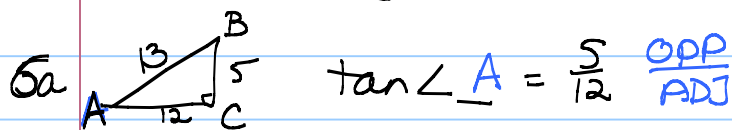
$\cos 45^\circ = \frac{x}{x\sqrt{2}} = \frac{1}{\sqrt{2}} = \frac{\sqrt{2}}{2}$

$\tan 45^\circ = \frac{x}{x} = 1$

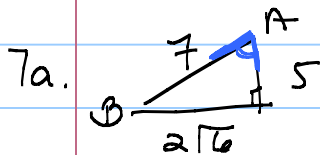


4a $\cos \angle H = \frac{3.9}{8.9} = \frac{39}{89}$

b. $\tan \angle K = 39/80$

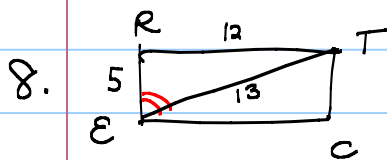


b. $\cos \angle A = \frac{12}{13}$ $\frac{ADJ}{HYP}$ c. $\frac{O}{H} \frac{5}{13} = \sin \angle A$



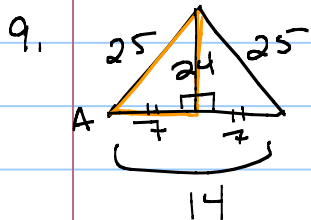
b. $\sin \angle A = \frac{O}{H} = \frac{2\sqrt{6}}{7}$

c. $\tan \angle B = \frac{O}{A} = \frac{5}{2\sqrt{6}} \frac{\sqrt{6}}{\sqrt{6}} = \frac{5\sqrt{6}}{12}$



$\sin \angle RET = \frac{O}{H} = \frac{12}{13}$

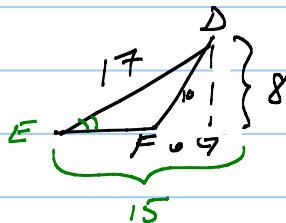
$\cos \angle RET = \frac{A}{H} = \frac{5}{13}$

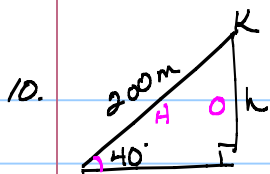


$\cos \angle A = \frac{A}{H} = \frac{7}{25}$

$\sin \angle E = \frac{O}{H} = \frac{8}{17}$

$\sin \angle DFG =$





$$\sin 40^\circ = \frac{h}{200}$$
$$200 \cdot \sin 40^\circ = h$$
$$200 (.6428) = h$$
$$128.56 = h \approx 129m$$

Silent Study rest of period
1-10 in 9.10 is homework.