

a. $\sin \angle A = 8/17$

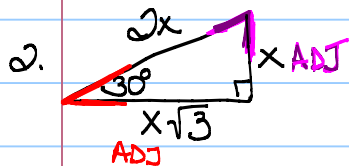
d. $\sin \angle B = 15/17$

b. $\cos \angle A = 15/17$

e. $\cos \angle B = 8/17$

c. $\tan \angle A = 8/15$

f. $\tan \angle B = 15/8$



a. $\sin 30^\circ = \frac{x}{2x} = \frac{1}{2}$

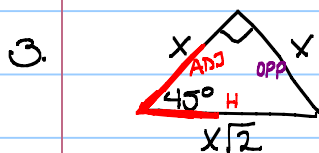
d

b. $\cos 30^\circ = \frac{x\sqrt{3}}{2x} = \frac{\sqrt{3}}{2}$

e

c. $\tan 30^\circ = \frac{x}{x\sqrt{3}} = \frac{1}{\sqrt{3}} \cdot \frac{\sqrt{3}}{\sqrt{3}} = \frac{\sqrt{3}}{3}$

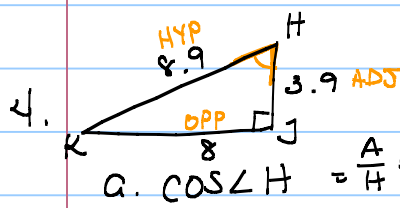
f



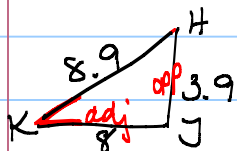
a. $\sin 45^\circ = \frac{x}{x\sqrt{2}} \cdot \frac{\sqrt{2}}{\sqrt{2}} = \frac{\sqrt{2}}{2}$

b. $\cos 45^\circ = \frac{\sqrt{2}}{2}$

c. $\tan 45^\circ = \frac{O}{A} = \frac{x}{x} = 1$



a. $\cos \angle H = \frac{A}{H} = \frac{3.9}{8.9} = \frac{39}{89}$



$\tan \angle K = \frac{3.9}{8} = \frac{39}{80}$