

P8 → notes were on white board

P7: 9.10

Note Title

2/25/2016

1a $\sin 21^\circ \approx .3584$

b. $\tan 52^\circ \approx 1.2799$

c

d

e

2a $\sin A = .4067$

TABLE

calc

$\arcsin(\sin A) = \arcsin(.4067)$
Inverses

SCAN sine column for .4067

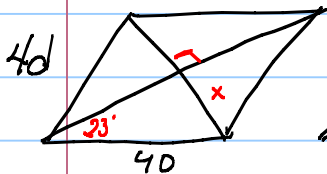
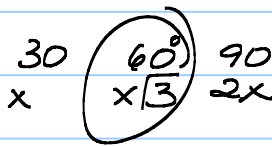
$\angle A = \sin^{-1}(.4067)$

$\angle A \approx 23.99$

$\angle A \approx 24^\circ$

$\angle A = 24$

3.c $\sin A = \frac{\sqrt{3}}{2}$
 $\sin A = \frac{O}{H}$



$\sin 23 = \frac{O}{H}$

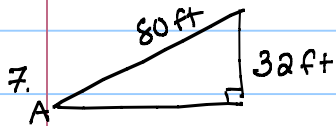
$\sin 23 = \frac{x}{40}$

$40(.3907) = x$

$4(.3907) = x$

$16 \approx x$

SOH CAH TOA



$\sin A = \frac{32}{80}$, $\sin A = \frac{2}{5}$, $\sin A = .4$
 $A \approx 24^\circ$

