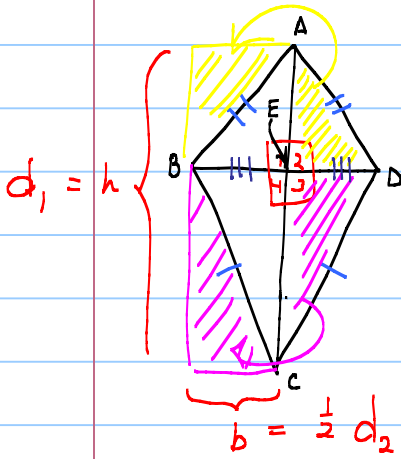




11.4: KITES

PRIDE KNOWLEDGE: AREA RECT

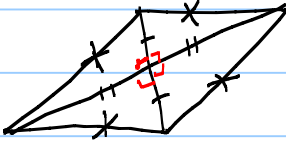


$$\left. \begin{aligned} \triangle AEB &\cong \triangle AED \\ \triangle CEB &\cong \triangle CED \end{aligned} \right\} \begin{array}{l} \text{both pair} \\ \text{by HL} \end{array}$$

$$A = b \cdot h$$

$$\frac{1}{2} \cdot d_2 \cdot d_1$$

Rhombus Review:



PROPS OF KITES

DIAG \perp

2 SETS OF \cong SDS

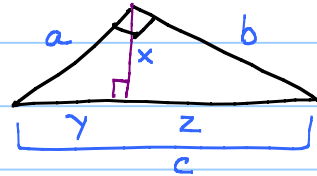
1 DIAG IS BIS

PROPS RHOMBUS

DIAGS \perp BIS OF EA OTHER

ALL 4 SDS \cong

ALT-HYP THEOREM



$$a^2 = yc \quad ; \quad b^2 = zc$$

$$x^2 = yz$$